

THE SUPERIOR

AUTHORITY • STATUS • STABILITY



The Superior by Neo Homes was inspired by the woods at Lake Michigan, but built with a Floridian touch.

At over 3700 sq ft, the four bedrooms, four and a half baths, and open concept home features refined finishes and state of the art design. It includes an office, formal dining room, dramatic floating staircase, and a custom fireplace. The sleek chef's kitchen has a European design, and the custom pantry and waterfall center island all allow you to entertain in style. The custom luxury pool with tropical landscaping enables you to escape to paradise, while the built-in outdoor kitchen impresses your guests.

Experience the best of Tampa's riverside and downtown living in a luxury home that feels like a year-round resort.

"Tampa has become an entrepreneur- and millennial-magnet, with bleisure a way of life. There's never been a more appealing time to touch down [to] plenty of sun, sand, and sea." - Time Magazine



**1019 West Ohio Avenue
Tampa, Florida 33603**

3,700+ SQ FT

5 BEDROOMS | 4.5 BATHS

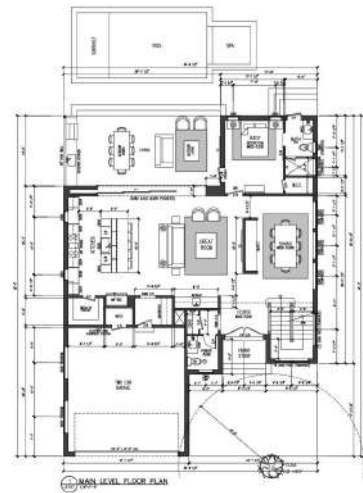
2 CAR GARAGE | POOL & SPA

FLOATING STAIRCASE

OUTDOOR KITCHEN

FORMAL DINING AREA

METAL ROOF



ALESSANDRA FIELD
SALES & MARKETING DIRECTOR
CBC1266393 • SL3511566

813.503.0031
ALESSANDRA@NEOHOMES.NET

3010 NORTH BOULEVARD
TAMPA, FL 33603
WWW.NEOHOMES.NET

